



# 10 Easy Steps to Start-up Your New G&D Chiller

**Standard Chillers:** GD-1.5H, 2H, 3H, 5H, 7H, 10H, 13.5H, 5x5H, 7x7H

**Scroll Chillers:** GD-7.5T-1HA, 10T-1HA, 15T-2HA

Please view install videos online at [www.gdchillers.com/installation-videos](http://www.gdchillers.com/installation-videos)

1. **Your chiller includes one (1) free year of Tera service for remote control and monitoring.** Internet access is needed. Run an ethernet cable from facility LAN router to electrical enclosure of chiller before proceeding.
2. Chiller must be positioned **with at least 24-30 inches of clearance on air intake side** (opposite louvered access panels) and **open to free air on exhaust side** (louvered panel side) with no obstructions. Adequate airflow is critical. Refer to CHILLER CLEARANCE REQUIREMENTS for more details. Securely anchor chiller to pad.
3. Install Wye-strainer (required) one size larger than mainline and purge valve on return line at chiller.
4. With the door switch in the OFF position, ensure all breakers are in the ON position. **The chiller must then be supplied with power for at least 4 hours. Verify there is a visible oil level in the compressor sight glass before proceeding.**
5. Flush all piping lines with water, then fill reservoir and piping with a 35% glycol to water mixture. **All compressor breakers must remain OFF during this step:**
  - a. Open supply valve, close return valve, and open purge valve on return line. **Ensure all glycol pump isolation valves are open.**
  - b. Fill reservoir with water. Turn the door switch to RUN and **verify correct pump rotation.**
  - c. Flush facility piping loop. Add water while flushing system (keep chiller reservoir topped-up). Once all debris has been flushed out, remove as much water from system as possible.
  - d. Open return valve and close purge valve on return line.
  - e. Fill reservoir/piping loop with 35% propylene glycol mixture. **Inhibited glycol is required** to prevent rust and corrosion in the piping system.
6. Temporarily close supply valve and **confirm glycol pressure is at 20 PSI.** Open supply valve and circulate glycol through entire piping loop for at least 30 minutes. Re-verify glycol mixture using a refractometer. The glycol mixture MUST be 35 to 40 %. Correct as needed before proceeding.
7. Turn the door switch back OFF and the compressor breaker(s) back ON. **Re-verify oil level in compressor sight glass before proceeding.**
8. **Open all service valves in chiller marked with tags.** Remove black plastic cap, use wrench on squared-off end of valve stem that protrudes furthest, and rotate until valve is fully open. See demonstration video on website or contact Tech Support for more details: 800-555-0973
9. Turn door switch to the RUN position. Scroll chiller models only: **Verify correct scroll compressor rotation.** When compressor turns on, refrigerant suction pressure should decrease and discharge pressure should increase.
10. Press arrow button until you see "Set" in the bottom right corner of the Mini Carel Display.
  - a. Press enter button twice
  - b. Use arrows to adjust set point to desired temperature
  - c. Press enter button
  - d. Press escape button
  - e. Verify the correct temperature is now shown after "Set:" on the home screen

**PLEASE VISIT GDCHILLERS.COM TO VIEW OUR INSTALLATION VIDEOS & FAQs**

\*G&D Chillers welcomes any questions or concerns. We can be reached at **800-555-0973** or **541-345-3903**

## CHILLER PLACEMENT

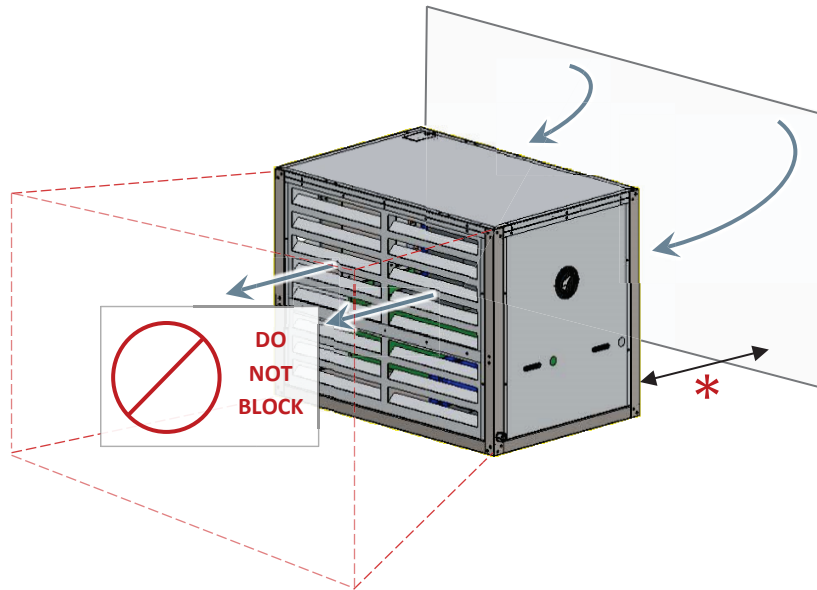
**Air cooled units** must sit outside on a solid level surface. A concrete pad is recommended. Location should be free of grass and other debris that could plug condenser fins. Unit must be securely anchored to pad.

**Ensure minimum clearance\* between condenser air intake side and any buildings, walls, etc.**

**No walls or obstructions in front of the unit:  
Louvered access side must be open to free air.**

<b>* MINIMUM CLEARANCES: AIR INTAKE SIDE</b>	
<b>24"</b>	GD-1.5, GD-2H, GD-3H, GD-5H, GD-7H GD-5x5H, GD-7x7H
<b>30"</b>	GD-10H, GD-13.5H, GD-7.5T-1, GD-10T-1, GD-15T-2

**Liquid cooled chillers** may be installed on a concrete pad indoors or outdoors. A properly sized pump and liquid cooling system for the chiller condenser must be supplied by the end user. Contact G&D Chillers for additional information and assistance with sizing.



**FIGURE 1. CHILLER CLEARANCE REQUIREMENTS**