



CHILLER MODEL: **GD-100CWS-PW**

230 Volt 1 Phase	
FLA	-
MCA	-
MOC	-

230 Volt 3 Phase	
FLA	17.2
MCA	25
MOC	35

460 Volt 3 Phase	
FLA	8.6
MCA	15
MOC	20

Dimensions	54"W x 45"D x 49"H
Frame	Powder Coated Steel
Housing	Powder Coated Aluminum
Tank	N/A
Compressor	N/A
Condenser	N/A
Water Pump	7.5 HP
GPM @ 25 PSI	253
Connections	3" CTS Flange
Heat Exchanger	Double-Walled Brazed Plate

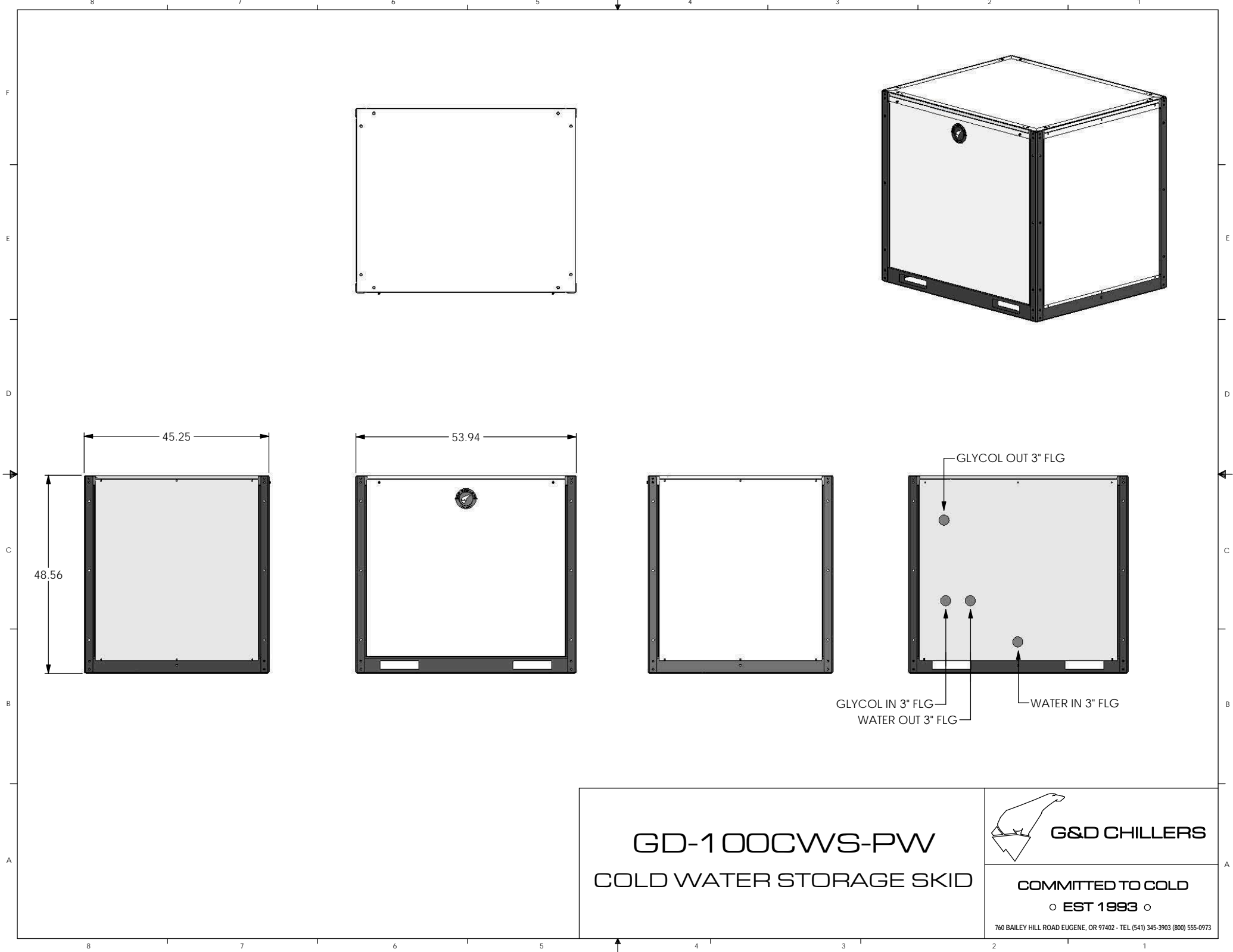
Controls	Single Stage Digital
Electrical Enclosure	NEMA 3R
Shipping Weight	1150 lbs
Heat Transfer Rate ¹	1,198,000 Btu/h

¹ Rating based on 240 gpm water, 70 °F in, 60 °F out, using 254.5 gpm glycol at 50 °F

Cold Water Skid package consists of the following:

- Water pump with optional VFD
- Digital temperature controller
- All insulated copper piping
- Supply & return water connections
- Supply & return glycol connections
- Powder coated steel frame
- Powder coated aluminum housing
- Engineered high efficiency heat exchanger rated for potable water
- Fluid bypass valve (shipped loose)
- ETL (UL508) listed complete control panel with single point electrical connection, breakers, starters & safety switches
- Aluminum access panels for easy service & maintenance
- Factory run tested

2 Year Parts and 1 Year Labor Warranty



GD-100CWS-PW
COLD WATER STORAGE SKID



G&D CHILLERS

COMMITTED TO COLD

o **EST 1993** o

760 BAILEY HILL ROAD EUGENE, OR 97402 - TEL (541) 345-3903 (800) 555-0973