



## CHILLER MODEL: GD-70CWS-PW

230 Volt 1 Phase	
FLA	-
MCA	-
MOC	-

230 Volt 3 Phase	
FLA	12
MCA	15
MOC	25

460 Volt 3 Phase	
FLA	6
MCA	15
MOC	15

Dimensions	54"W x 45"D x 49"H
Frame	Powder Coated Steel
Housing	Powder Coated Aluminum
Tank	N/A
Compressor	N/A
Condenser	N/A
Water Pump	5 HP
GPM @ 25 PSI	170
Connections	2" CTS Flange
Heat Exchanger	Double-Walled Brazed Plate

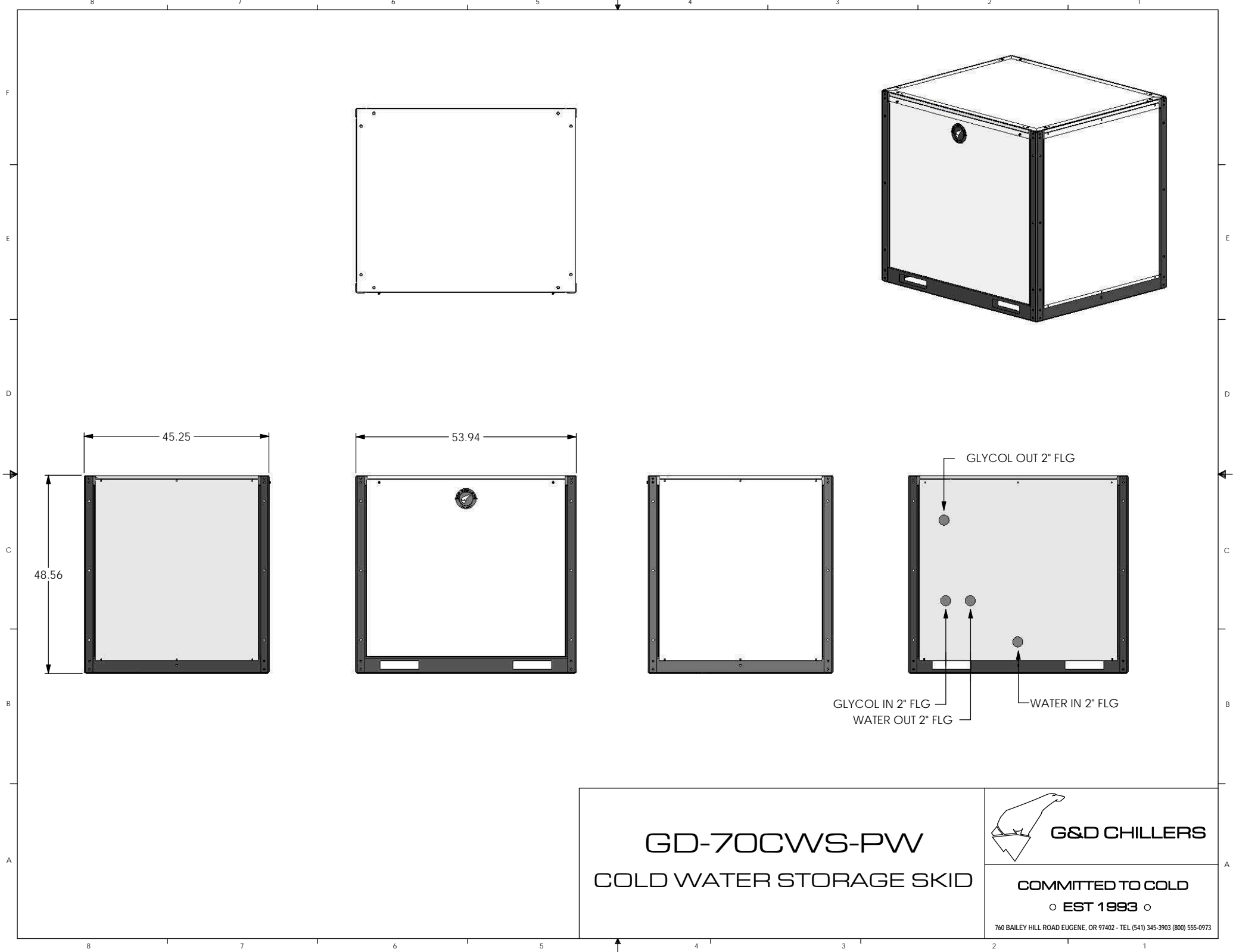
Controls	Single Stage Digital
Electrical Enclosure	NEMA 3R
Shipping Weight	850 lbs
Heat Transfer Rate <sup>1</sup>	842,000 Btu/h

<sup>1</sup> Rating based on 168.7 gpm water, 70 °F in, 60 °F out, using 178.9 gpm glycol at 50 °F

### ***Cold Water Skid package consists of the following:***

- Water pump with optional VFD
- Digital temperature controller
- All insulated copper piping
- Supply & return water connections
- Supply & return glycol connections
- Powder coated steel frame
- Powder coated aluminum housing
- Engineered high efficiency heat exchanger rated for potable water
- Fluid bypass valve (shipped loose)
- ETL (UL508) listed complete control panel with single point electrical connection, breakers, starters & safety switches
- Aluminum access panels for easy service & maintenance
- Factory run tested

***2 Year Parts and 1 Year Labor Warranty***



**GD-70CWS-PW**  
**COLD WATER STORAGE SKID**



**G&D CHILLERS**

**COMMITTED TO COLD**

o **EST 1993** o

760 BAILEY HILL ROAD EUGENE, OR 97402 - TEL (541) 345-3903 (800) 555-0973