



CHILLER MODEL: **GD-120T-4HE**

208-240V 1-Phase	
FLA	-
MCA	-
MOC	-

208-240V 3-Phase	
FLA	-
MCA	-
MOC	-

460-480V 3-Phase	
FLA	294
MCA	308
MOC	350

Dimensions ¹	91"W x 274"L x 113"H
Frame	Powder Coated Steel
Housing	Powder Coated Aluminum
Tank	930 Gallon Stainless Steel
Compressor	Tandem Scroll (x2)
Condenser	Air-Cooled Vertical Discharge
Process Pump	10 HP
Process Flow	340 GPM @ 25 PSI
Connection	4" CTS Flange
Chiller Pump	5 HP
Heat Exchanger	Stainless Steel Brazed Plate
Controls	Microprocessor w/ Comm.

Electrical Enclosure	NEMA 3R
Ship/Operating Weight	13,000/21,000 lbs
Decibels @ 10'	82 dBA
Refrigerant	R410A

Cooling Capacity by Leaving Fluid Temperature²

LFT	Btu/H	kW
40 °F	1,254,000	367.5
50 °F	1,498,000	439.0
60 °F	1,771,000	519.0

1. Package chiller dimensions, remote condenser options will vary

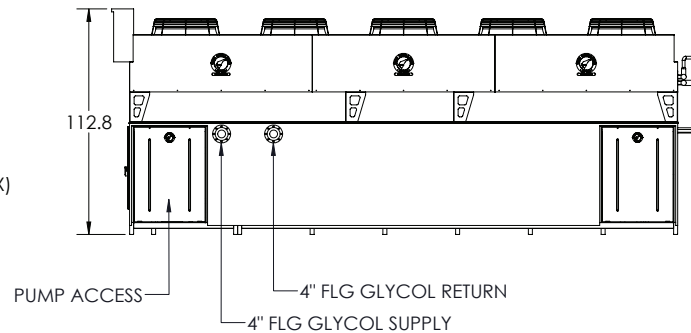
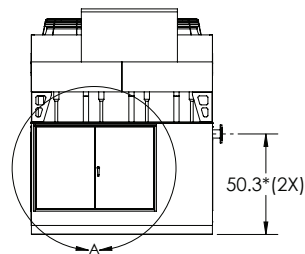
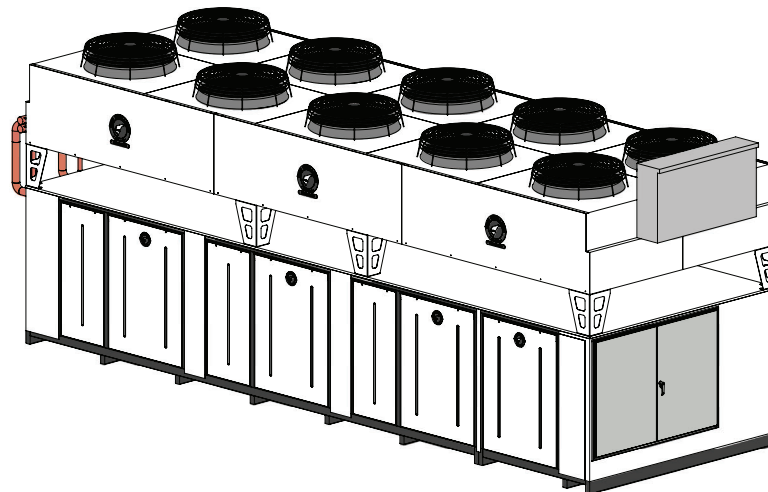
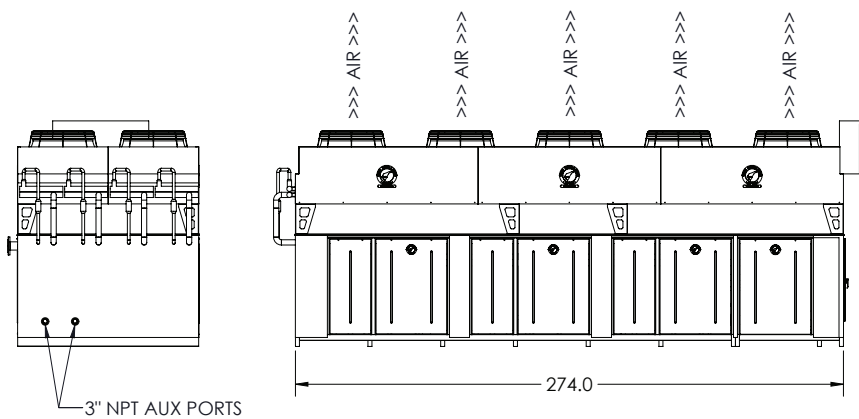
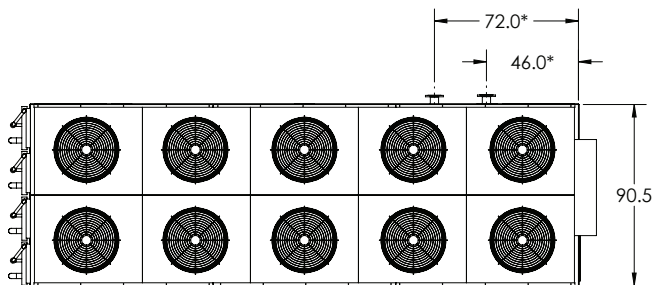
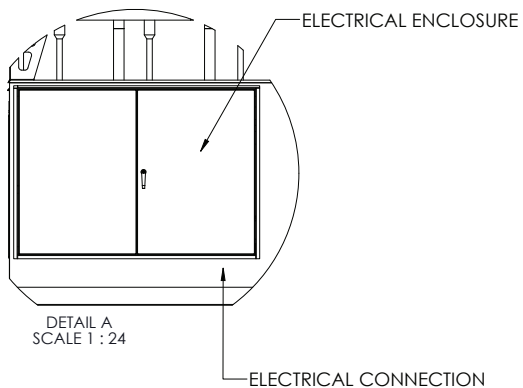
2. All capacities at 90°F ambient

3. Specifications subject to change without notice

Chiller package consists of the following:

- Two complete refrigeration circuits
- Air-cooled condenser
- Process pump with VFD
- Chiller pump
- Fluid bypass valve
- Freeze stat safety switch
- All insulated copper piping
- Powder coated steel frame
- Powder coated aluminum housing
- Two sets of tandem compressors optimize efficiency & load balancing
- Engineered high efficiency heat exchanger for maximum energy savings
- Insulated stainless steel glycol reservoir with baffle plate
- Microprocessor controller with communication capabilities
- ETL (UL 508A) listed complete control panel with single point electrical connection, breakers, starters & safety switches
- CTS flange glycol supply & return connections
- Louvered aluminum access panels for easy service & maintenance
- Factory run tested and fully charged with refrigerant

2 Year Parts and 1 Year Labor Warranty



NOTES:

1. ASTERISK * INDICATES APPROXIMATE DIMENSIONS, DO NOT USE TO PRE-FABRICATE CONNECTING PIPING
2. ENSURE A MINIMUM OF 8 FT CLEARANCE AROUND ALL SIDES OF UNIT
3. UNIT MUST BE SECURELY ANCHORED TO A FLAT AND LEVEL PAD
4. INSTALLATION OF ELECTRICAL SERVICE:
 - A. POWER WIRING TO TERMINATE AT DISTRIBUTION BLOCKS INSIDE ENCLOSURE
 - B. PENETRATIONS TO BE DRILLED IN FIELD BY OTHERS THROUGH BOTTOM OF ENCLOSURE
 - C. USE ONLY CONDUIT/FITTINGS WITH SAME (OR HIGHER) ENVIRONMENTAL RATING AS ENCLOSURE
 - D. FIELD-INSTALLED EXTERNAL DISCONNECT TO BE PROVIDED BY OTHERS

GD-120T-4HE VERTICAL AIR CHILLER

TOLERANCES: .X = $\pm 0.50"$.XX = $\pm 0.25"$ (UNLESS OTHERWISE SPECIFIED)

DRAWN:	DS
APPROVED:	TH
DATE:	05/05/25



G&D CHILLERS
COMMITTED TO COLD

130 E FIRST AVE, JUNCTION CITY, OR 97448
TEL: (541) 345-3903 (800) 555-0973